

Corporate partnerships at the ICR



A patient is lying on a table inside a medical scanner, possibly a PET or CT scanner. The scene is dimly lit with a blue and purple glow. A hand is visible on the right side, operating a control panel with several buttons and a small digital display showing numbers like 000, 060, and 15665. The text "Our mission is to make the discoveries that defeat cancer." is overlaid in white on the left side of the image.

Our mission is
to make the
discoveries that
defeat cancer.

One in two of us will
be affected by
cancer.

“Abiraterone saved my life.
Without clinical research,
I would not be here today.”

Alfred
Prostate cancer survivor



You and your staff are unique.

Advances in cancer research have paved the way for a new generation of treatments. Patients are living longer and better than ever before.

But the disease continues to claim far too many lives. And the world's cancer burden is growing.

I am Annie, the Corporate Partnerships Manager here at the ICR. I will work with you to create a bespoke partnership that makes you

and your colleagues proud to be a part of our mission.

I very much look forward to getting to know you. In the meantime, this brochure of opportunities is designed to help you get started.

The ICR's mission is to make the discoveries that defeat cancer. If we work together, we can make them faster.



Annie Edwards

Corporate Partnerships Manager

E: Annie.Edwards@icr.ac.uk

T: 020 3437 6057

An unrivalled track record in cancer drug discovery



The ICR is home to the most successful academic cancer drug discovery centre worldwide.

Drug discovery is an intensely creative endeavour that, with the right investment, brings kinder treatments to patients and saves lives.

ICR researchers discovered:

Abiraterone for prostate cancer.

And our scientists were fundamental to the discovery and development of:

Capivasertib for breast cancer; and
Olaparib for ovarian, breast, pancreatic and prostate cancers.

Three approved drugs, since 2012, that are now helping cancer patients across the world.

Bringing the science to you

A “lunch and learn” session breaks up the working week and encourages staff to spend time together at the office.

We will bring our fascinating science to you in an accessible format.

Give your staff the opportunity to learn about:

- Cancer discoveries: the good news.
- The genetics of cancer risk.
- Case studies and personal stories (interactive).

Contact annie.edwards@icr.ac.uk to arrange a date.



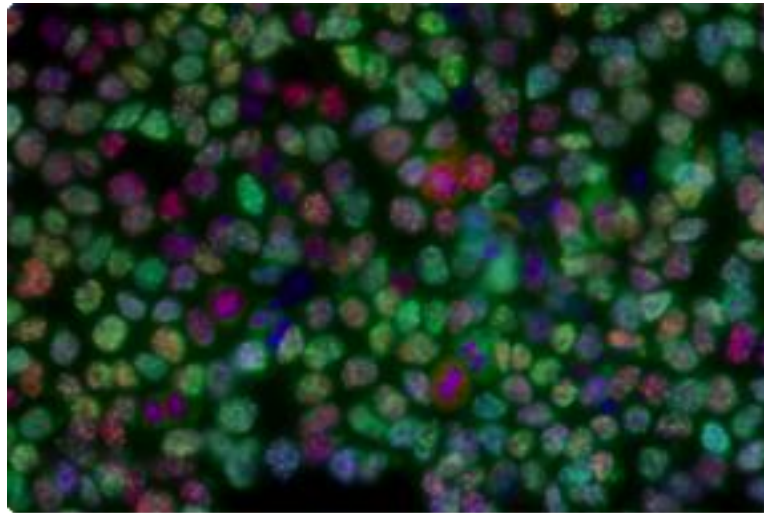
Groundbreaking discoveries

The ICR has an outstanding record of scientific achievement dating back more than 100 years.

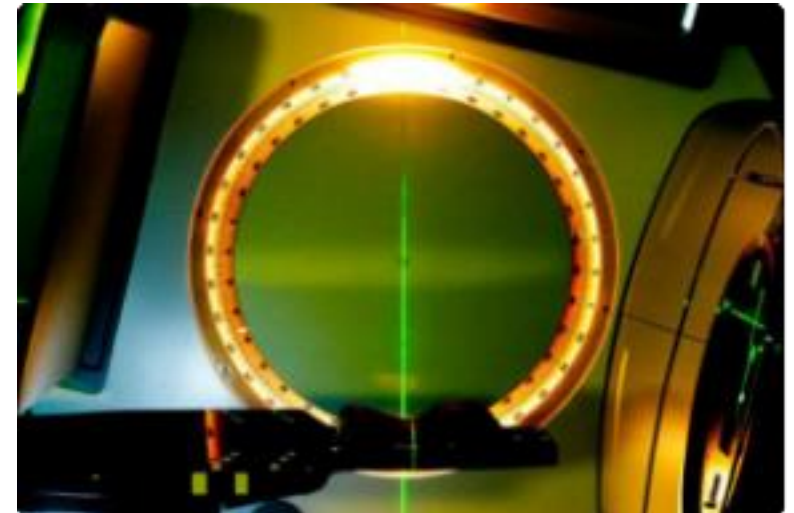
Our scientists:



First identified many of the cancer-causing chemicals in cigarette smoke and coal tar – including the first pure carcinogen ever to be isolated.



Provided the first conclusive evidence that the basic cause of cancer is damage to DNA, marking a turning point in understanding of the disease.



Have made major contributions to modern high-precision radiotherapy techniques, increasing their effectiveness and reducing side effects.

Invitations to exclusive gatherings

The ICR hosts three evening receptions per year. These are unique opportunities to hear from some of the UK's leading experts in cancer.

Corporate partners will also be invited to our wonderful Christmas fundraiser, Carols from Chelsea*.

*Tickets are subject to availability.



“It was a privilege to be invited to listen to Victoria Derbyshire interview the incredible Professor Sir Mel Greaves at the Royal Society of Chemistry hosted by The Institute of Cancer Research.”



Daniel May
Director at Socius

Private lab tours with our scientists



Corporate supporters will be invited to visit our labs and meet our scientists at our Sutton and Chelsea campuses.

Lab tours bring the science to life and are the best way to understand what is really going on at the vanguard of cancer research discoveries.



Twin a boardroom with one of our labs

Showcase your commitment to defeating cancer by “twinning” one of your office meeting spaces with one of our labs.

Both the chosen boardroom and lab will bear a plaque to celebrate your generosity.

For a £10,000 donation to the lab, you can be twinned with us for two years.

To arrange a bespoke plaque, please contact annie.edwards@icr.ac.uk.



Sports and challenge events with #TeamICR



Run with us:

- The London Marathon
- Edinburgh Marathon Festival
- London Landmarks Half Marathon
- Royal Parks Half Marathon
- The Terry Fox Run (national)

Cycle with us:

- Ride London
- London to Paris Cycle
- One More City (international)

Challenge yourself:

- Ben Nevis Trek
- The Climb of Life (Lake District)
- Tough Mudder (national)

[Book your place today.](#)

Top tip: company match funding is a great incentive for staff fundraisers to go the extra mile.

“We’ve all been touched by cancer at some point in our lives, whether personally or through a family or friend. Sadly, half of us will develop cancer in our lifetimes. That’s why the work of The Institute of Cancer Research is so important.”



Olaide Oboh
Executive Director at Socius

The Terry Fox Run UK

Terry Fox wasn't just an inspiring Canadian. He was an inspiring human. By age 22, he had raised \$24.3m for cancer research by running a marathon a day across Canada on his prosthetic leg.

Every year, we honour this brave young man's legacy by following in his footsteps at the Terry Fox Run.

Join us this autumn and choose your distance, then run, walk or cycle your way to the finish line. Entry is free and all are welcome.



[Book your place today.](#)

Bespoke challenge events

We can help you organise bespoke fundraising and team-building events just for your staff.

Contact annie.edwards@icr.ac.uk to discuss.



Support EDI and social mobility in STEM

Twice per year, the ICR invites local students to our Careers in Research open evenings to meet scientists and learn about the broad range of careers in cancer research.

In 2023, 84% of students asked said they felt more inspired about pursuing a career in science after attending the event, and 88% had a better understanding of the skills needed.

If you would like to observe an open evening or discuss how your company can support the next generation of cancer researchers, please contact annie.edwards@icr.ac.uk.



“I was utterly delighted to see just how focused the students were on the event. It was just brilliantly organised and the ICR team could not have been more wonderful – they were just so engaged with our students and their subject.”



Sophie Harrowes
Careers Lead at Hammersmith Academy

Helping you achieve your ESG goals

The ICR created the Centre for Global Oncology in 2022 to address inequalities in cancer treatment in lower and middle-income countries.

If you have ESG targets related to the UN's third Sustainable Development Goal, or to international development in general, contact annie.edwards@icr.ac.uk to find out how you can support the Centre for Global Oncology.



“Cancer is a global challenge and we need to work together as a research community to tackle it. When we share resources and learnings it moves forward cancer research as a whole and strengthens the impact.”



Dr Anguraj Sadanandam
Director of the Centre
for Global Oncology
at the ICR

Sponsorship packages

Opportunities to put your brand in front of our vast network of scientists and donors.

The ICR Annual Conference – over 400 ICR scientists gather for two days to present their most recent discoveries.

Carols from Chelsea – the ICR's flagship Christmas fundraising event that attracts the ICR's high-net-worth supporters.



Creating the next generation of cancer research leaders

Witness the progress and results of a young researcher becoming a fully qualified cancer scientist and future leader in their field.

World-class medical research offers the greatest hope of defeating cancer, and training the next generation of scientists will ensure that progress continues.

The ICR is happy to discuss naming opportunities for any funded studentships.

Your company can contribute to funding a PhD student over four years, or a Clinical Research Fellow over two years.



“The ICR gives you a great foundation to start your career in cancer research – there are so many opportunities to learn the skills you need to thrive as a postdoc or a future team leader.”

Meg
Second year PhD student.

More ways to have positive impact

Gifts in kind – donate your products and services to support our mission.

Pro bono support – enjoy working closely with us as we exchange skills and ideas.

Payroll giving – it is quick and easy to give your staff the option to make donations from their pay cheque tax-free. Visit [gov.uk/payroll-giving](https://www.gov.uk/payroll-giving) to find out how.



Thank you

Corporate partnerships make a tremendous difference to our mission.

They accelerate the pace and widen the scope of our research – driving the creation of new treatments and cures for people with cancer.

Thank you for your support. We hope to hear from you very soon.



“I take my pill every day and get on with my life.”

Christine
Breast cancer survivor

The Institute of Cancer Research is one of the world's most influential cancer research institutes

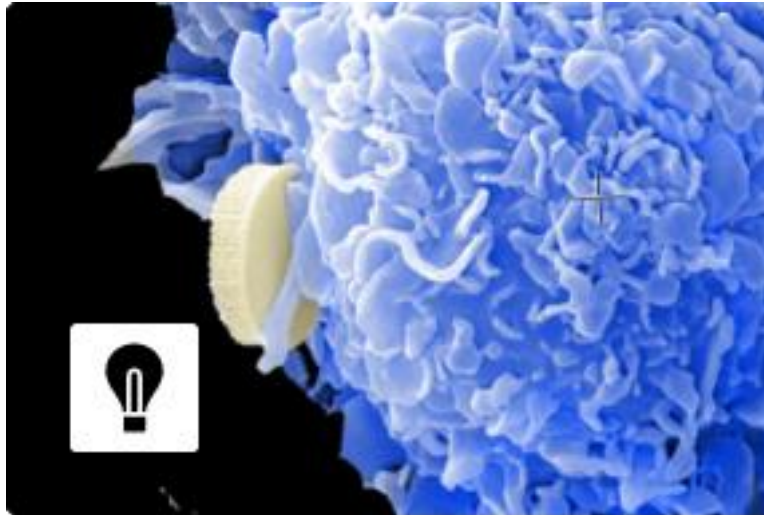
Making discoveries

Scientists and clinicians are working in our labs every day to make a real impact on cancer patients' lives.



Our unrivalled track record

Whether in cancer biology, genetics, personalised therapies or new drug discoveries, our achievements speak for themselves.



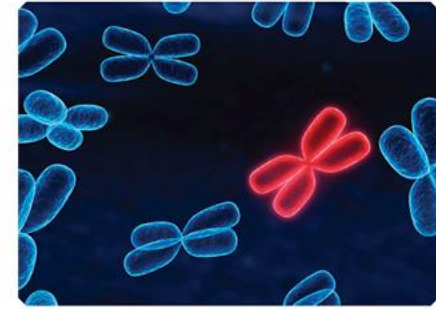
Translational research

Our unique partnership with the Royal Marsden and bench-bedside approach means we create and deliver results in a way that other institutions cannot.



Unrivalled
track record

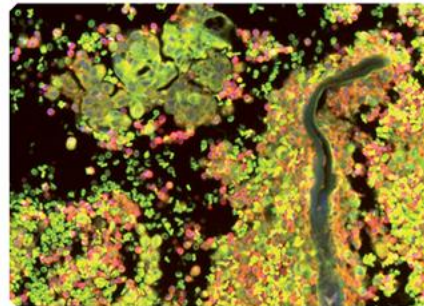
ICR The Institute of
Cancer Research



**Making the
discoveries that
defeat cancer**



ICR



One of the world's
most influential
cancer research
institutes